



PHILLIPS

Phone 770.394.1616 Fax 770.394.1314

CONSULTANT _____

SEAL _____

ISSUE & REVISION RECORD _____

DATE DESCRIPTION

TENANT _____

PROJECT _____

PARKWAY POINTE
RETAIL CENTER
3103 COBB PARKWAY
ATLANTA, GEORGIA

CLIENT _____

Parway Pointe Retail Corporation
Stockbridge Capital Group
3414 Peachtree Road
Suite 1160
Atlanta, GA 30326

PHILLIPS JOB NUMBER 1200901

ISSUE DATE 7-22-14

DRAWN BY/CHECKED BY MT/GC

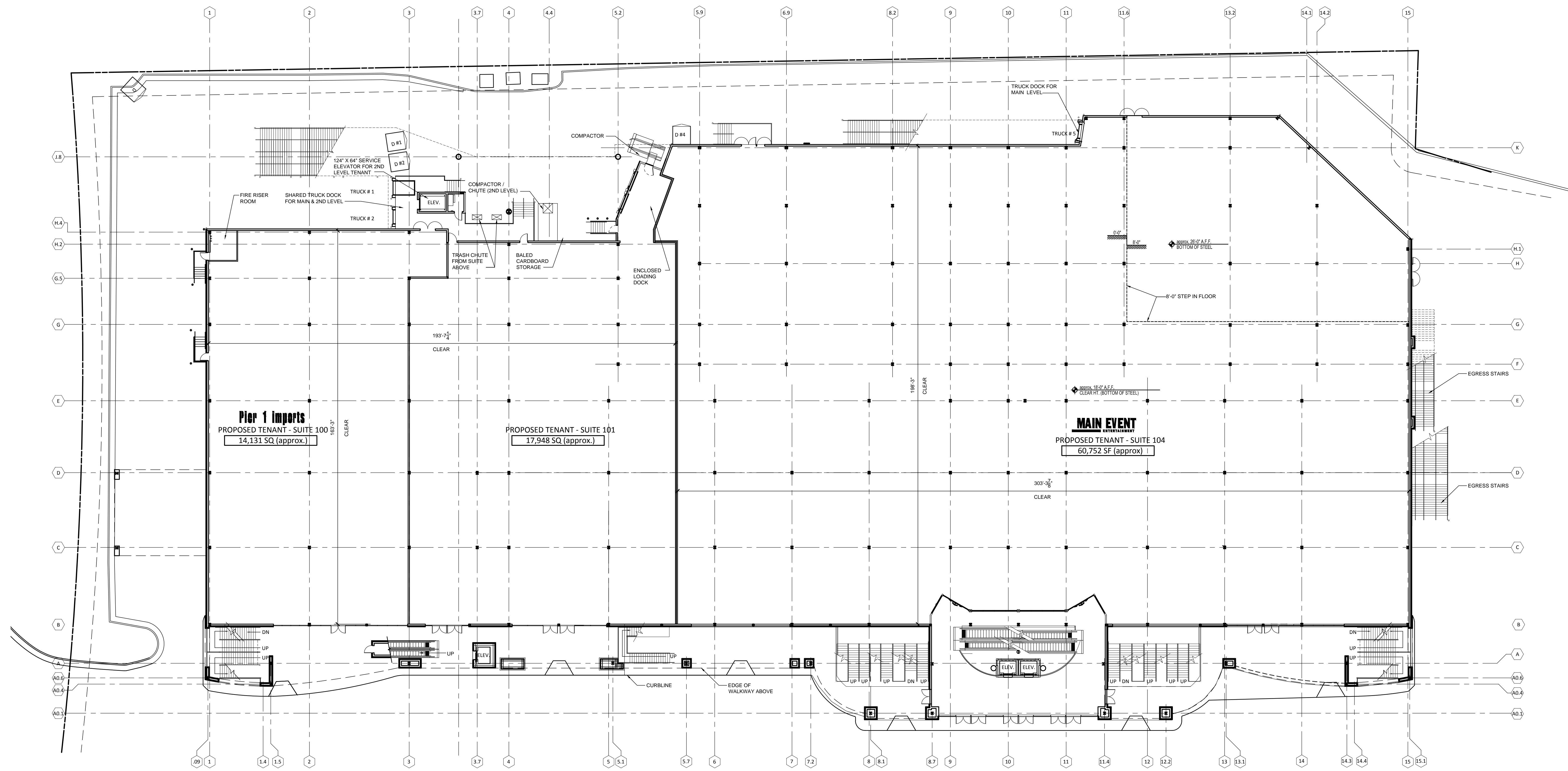
DRAWING TITLE _____

OVERALL PROPOSED LEVEL 1 PLAN & ELEVATION

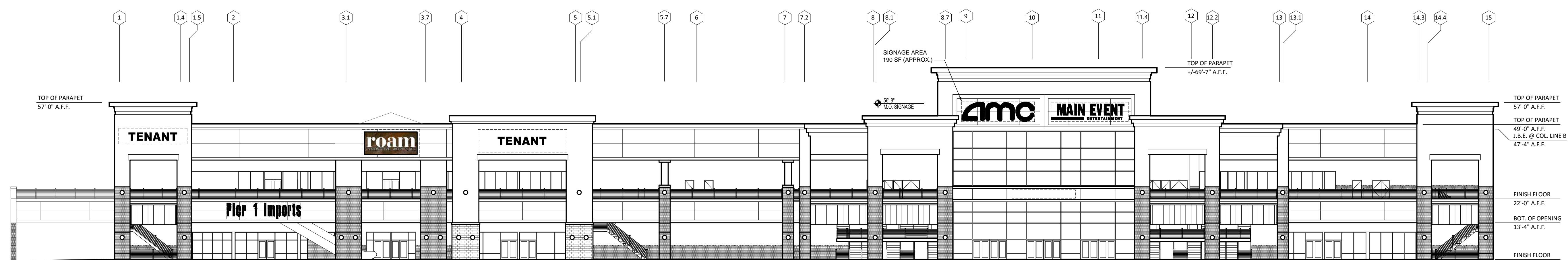
SHEET NUMBER _____

LOD-12A

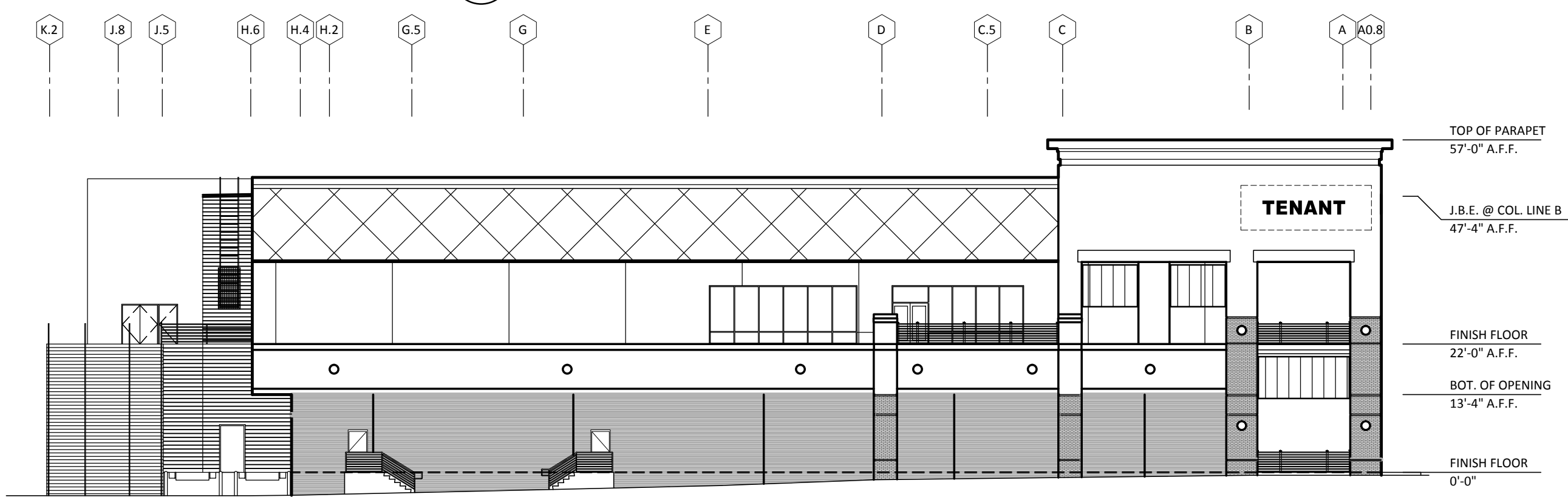
9000 CENTRAL PARK WEST
SUITE 400
ATLANTA, GEORGIA 30328



1 OVERALL PLAN - LEVEL ONE
SCALE: 1"=20'-0"
NORTH



2 PROPOSED FRONT ELEVATION
SCALE: 1"=20'-0"



3 PROPOSED SIDE ELEVATION
SCALE: 1"=20'-0"



PHILLIPS

Phone 770.394.1616 Fax 770.394.1314

CONSULTANT _____

SEAL _____

ISSUE & REVISION RECORD

#	DATE	DESCRIPTION

TENANT _____

PROJECT

PARKWAY POINTE
RETAIL CENTER
3103 COBB PARKWAY
ATLANTA, GEORGIA

CLIENT

Parkway Pointe Retail Corporation
Stockbridge Capital Group
3414 Peachtree Road
Suite 1160
Atlanta, GA 30326

PHILLIPS JOB NUMBER 1200901

ISSUE DATE 7-22-14

DRAWN BY/CHECKED BY MT/GC

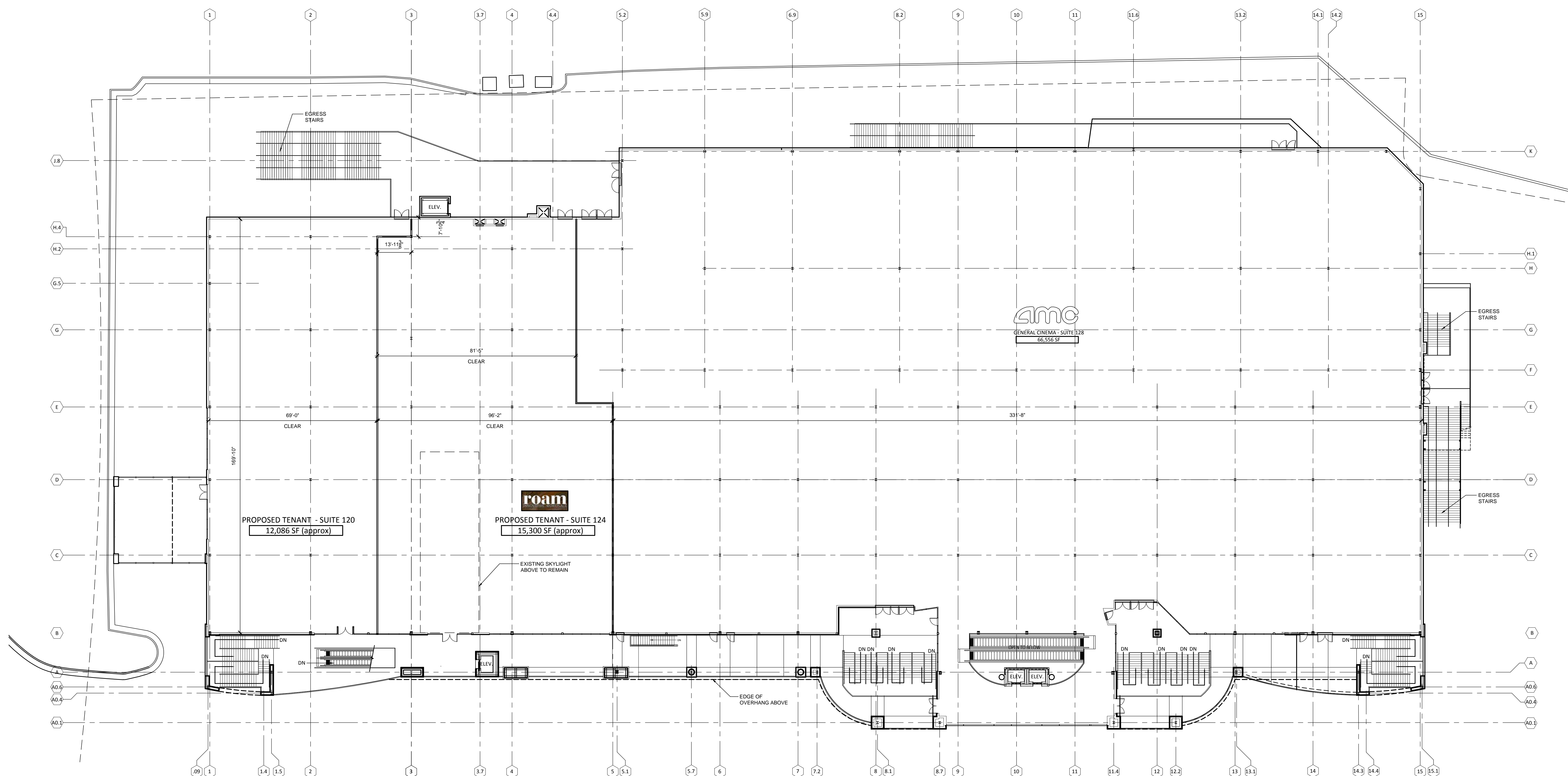
DRAWING TITLE

OVERALL PROPOSED
LEVEL 2 PLAN
& ELEVATION

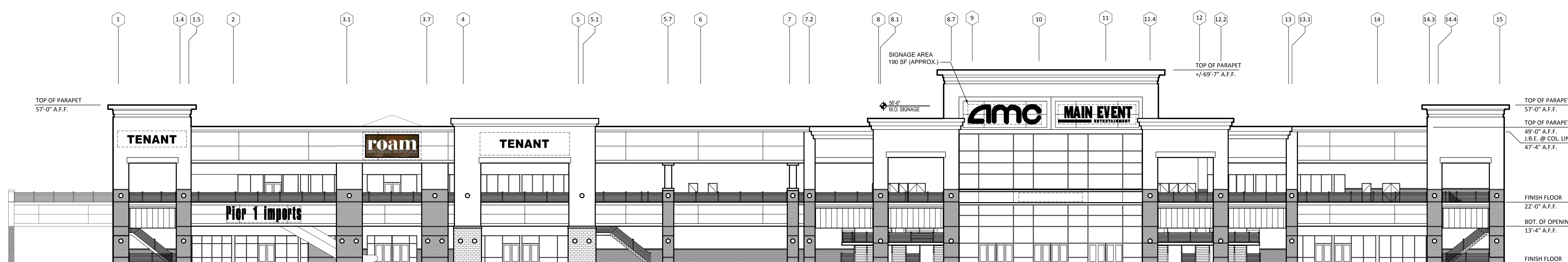
SHEET NUMBER

LOD-12B

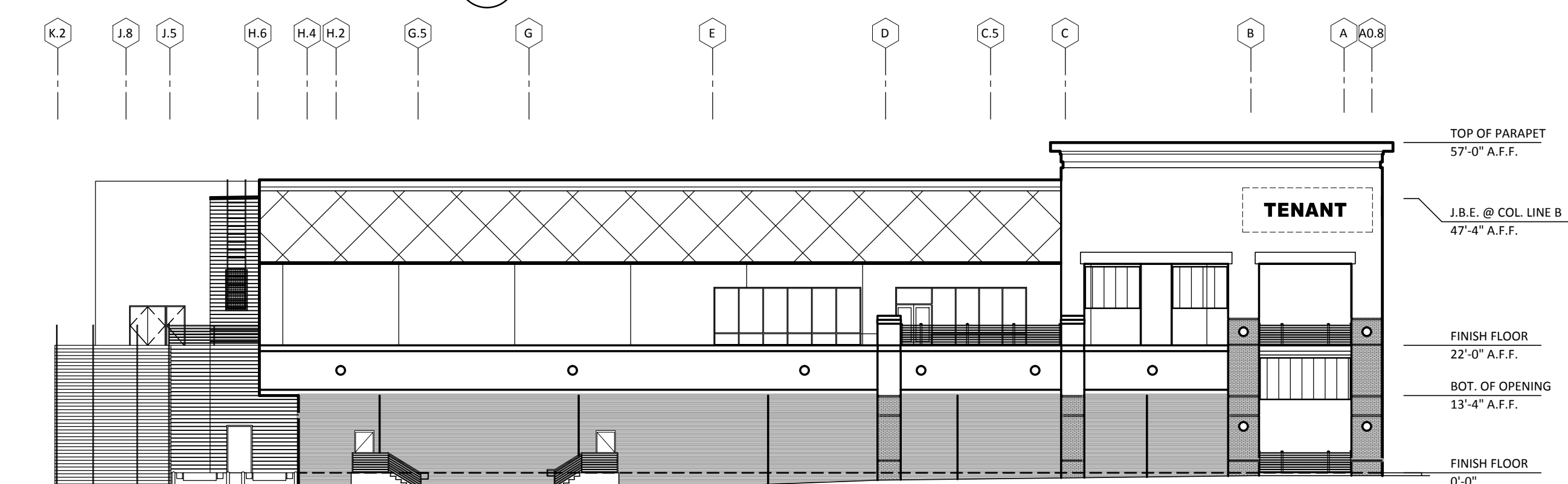
9000 CENTRAL PARK WEST
SUITE 400
ATLANTA, GEORGIA 30328



1 OVERALL PLAN - LEVEL TWO
SCALE: 1"=20'-0"



2 PROPOSED FRONT ELEVATION
SCALE: 1"=20'-0"



3 PROPOSED SIDE ELEVATION
SCALE: 1"=20'-0"



FRONT ELEVATION



SIDE ELEVATION

CLIENT
Parkway Pointe Retail Corporation
**Stockbridge Capital
Group**

PROJECT
PARKWAY POINTE
ELEVATION DEVELOPMENT

LOCATION
ATLANTA, GEORGIA

JOB NUMBER
1200901

DATE
06-24-2014

BY
MT / CDP / GLC

DRAWING
ELEVATION CONCEPT


PHILLIPS
NORTH TERRACES
400 PERIMETER CENTER TERRACE - SUITE 650
ATLANTA, GA 30346
Phone 770.394.1616 Fax 770.394.1314