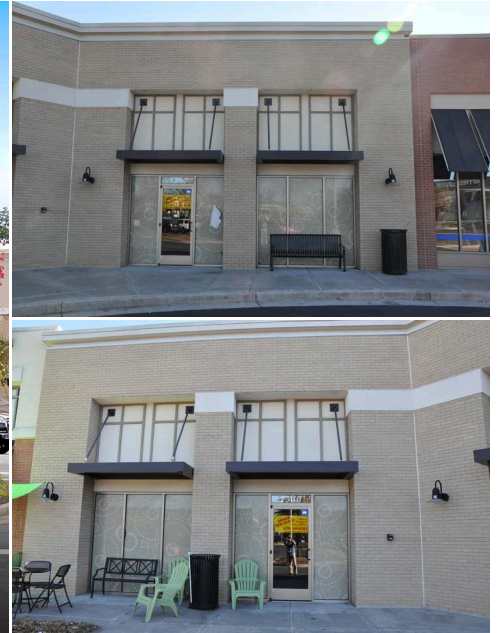


Canton Marketplace

1810 Cumming Highway | Canton, GA 30114



Highlights

Type: Multi-Tenant Retail
 Total SF: 352,027
 Parking Spaces: 1,728
 Year Built: 2019

Contact

Fraser Gough
 770-956-8383
 fraser@retailplanningcorp.com

Benton Green
 770-956-8383
 bgreen@retailplanningcorp.com

Property Highlights

- 352,000-square-foot* regional power center anchored by Dick's Sporting Goods, PetSmart, Bed Bath & Beyond, T.J. Maxx and Books-A-Million. The center is shadowanchored by SuperTarget,** Lowe's** and Kohl's.**
- Strong regional accessibility and visibility with its location adjacent to Interstate 575, a major growth corridor in Atlanta's northwest suburbs.
- The 80-bed Northside Hospital Cherokee Campus, with more than 800 employees, is set to open immediately adjacent to the property in 2015.
- Only one other shopping center of comparable tenancy exists within 13 miles.

*Approximate. **Not owned.

Retailers Include



Demographics***

	1-Mile	3-Mile	5-Mile
2019 Est Population	2,259	22,914	60,532
2019 Est Daytime Population	2,679	14,422	24,294
2019 Est Households	687	7,774	20,780
2019 Est Avg Household Income	64,729	50,258	62,582
2019 Est Med Household Income	93,454	69,190	85,213

*Approximate. **Texas DOT ***Source: Claritas 2019



4700 Wilshire Boulevard, Los Angeles, CA 90010 | www.cimgroup.com

Canton Marketplace



Not to scale. Owned by Cole Credit Property Trust IV, Inc., sponsored by CCO Group, LLC (CCO Group), a subsidiary of CIM Group* (CIM*). Corporate tenants may also occupy numerous properties that are not owned by CIM. CCO Group and CIM are not affiliated with, associated with, or a sponsor of any of the tenants pictured or mentioned. The names, logos and all related product and service names, design marks and slogans are the trademarks or service marks of their respective companies.



4700 Wilshire Boulevard, Los Angeles, CA 90010 | www.cimgroup.com

Canton Marketplace



A0100	Rack Room Shoes	6,496 SF
B0100	Available	4,410 SF
B0110	Sports Clips	1,421 SF
B0115	Available	3,079 SF
B0120	Childrens Place	3,476 SF
B0130	Kay Jewelers	1,996 SF
C0100	Five Below	8,259 SF
C0130	Available	6,131 SF
E0100	Canton Marketplace Dentistry	2,801 SF
E0110	Mattress Firm	5,218 SF
F0100	La Parrilla Mexican Restaurant	5,100 SF
F0110	Vision Works	2,877 SF
G0100	Taco Mac	6,900 SF
G0110	Serenity Nails and Spa	1,600 SF
G0120	Canton Jewelry	1,268 SF
G0140	Available	2,218 SF
G0150	Available	4,315 SF
H0100	Edible Arrangements	1,374 SF
H0110	Available	1,490 SF
H0120	GameStop	1,985 SF
H0130	Quick Weight Loss	1,626 SF
H0140	Arctic Brain Freeze Yogurt	1,603 SF
H0150	Available	3,026 SF
H0160	Available	3,243 SF
H0170	PT Solutions	2,610 SF
H0180	Available	
H0190	Available	5,000 SF
I0100	Superior Healthcare	12,000 SF
J0100	Cheeseburger Bobby's	1,846 SF
J0300	China Star	1,600 SF
J0400	Smoothie King	1,446 SF
J0500	Available	1,210 SF
J0600	Barber Shop	1,210 SF
J0700	Brooklyn Joe's	2,478 SF
104	Available	4,410 SF
1000	Best Buy	30,428 SF
1130	Rio Body Wax	1,526 SF
2000	Books A Million	15,500 SF
2100	Massage Envy Spa	2,810 SF
2110	Kirklands	6,506 SF
4000	Ulta Salon	10,131 SF
5000	off Broadway Shoe Warehouse	18,360 SF
6000	TJ Maxx	28,000 SF
7000	Bed Bath & Beyond	23,391 SF
8000	Dicks Sporting Goods	50,750 SF
9000	OfficeMax	18,200 SF
10000	PetSmart	18,570 SF
99910	Wood & Fullerton Stores LLC Ca	
99930	Hotcakes Canton Venture, LLC	
99940	Waffle House, Inc.	
99950	Olive Garden	7,500 SF
99960	Chick Fil A	5,000 SF
999	Wood & Fullerton Stores, LLC	



4700 Wilshire Boulevard, Los Angeles, CA 90010 | www.cimgroup.com