

11760 Haynes Bridge Road

Alpharetta, Georgia

11760 Haynes Bridge Road, Alpharetta, GA 30009

- 2,972 sf endcap with covered patio available
- 13,563 sf neighborhood center with excellent restaurant/retail opportunity
- Only .5 miles from Alpharetta City Center and 1.4 miles from Avalon
- Approximately 1 mile west of GA 400
- Short walk to future Alpha Loop
- Covered patio (conditioned) + non-covered patio
- Excellent frontage on Haynes Bridge Rd
- Ample parking
- Monument signage available
- Two points of ingress/egress with signalized light

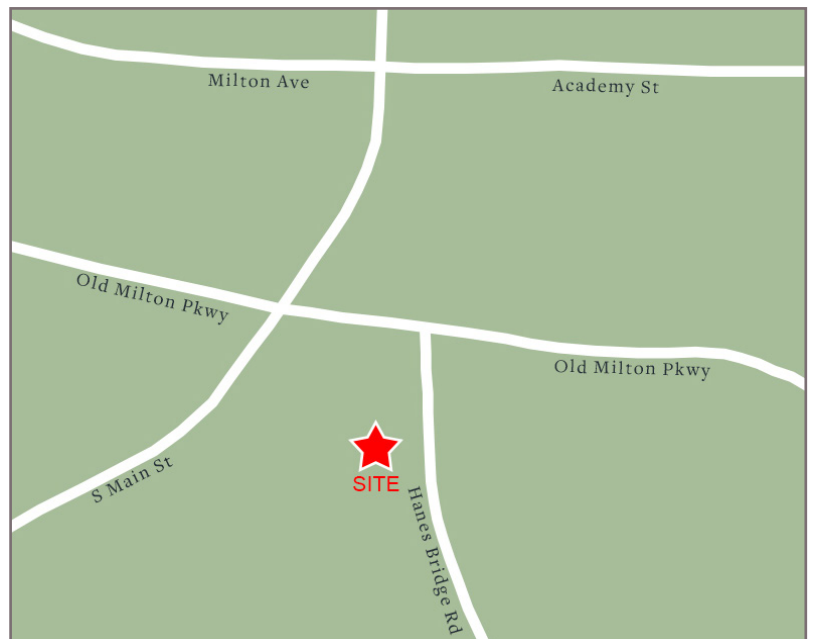


TRAFFIC COUNTS

Haynes Bridge Road	24,200	AADT
Old Milton Parkway	36,500	AADT

DEMOGRAPHICS

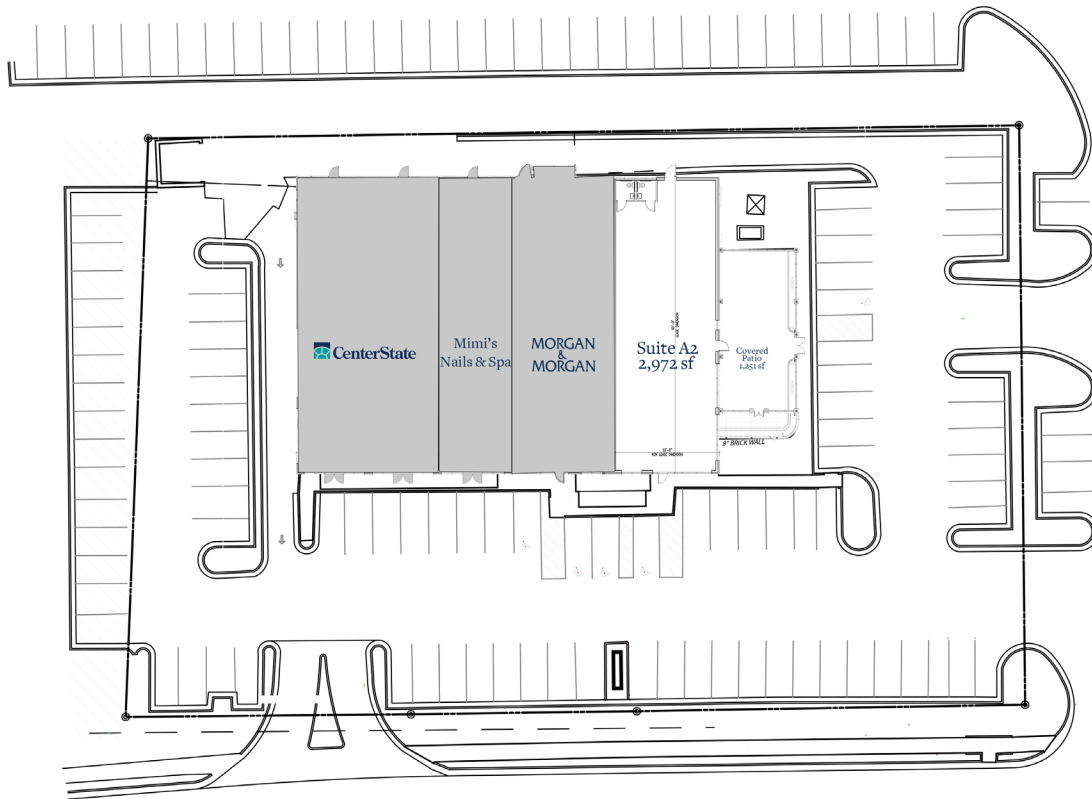
	1 Mi Radius	3 Mi Radius	5 Mi Radius
Population	7,357	67,063	193,626
Households	3,631	27,971	75,998
Avg HH Income	\$125,318	\$135,514	\$144,797
Daytime Pop	11,824	90,173	137,444



11760 Haynes Bridge Road

Alpharetta, Georgia

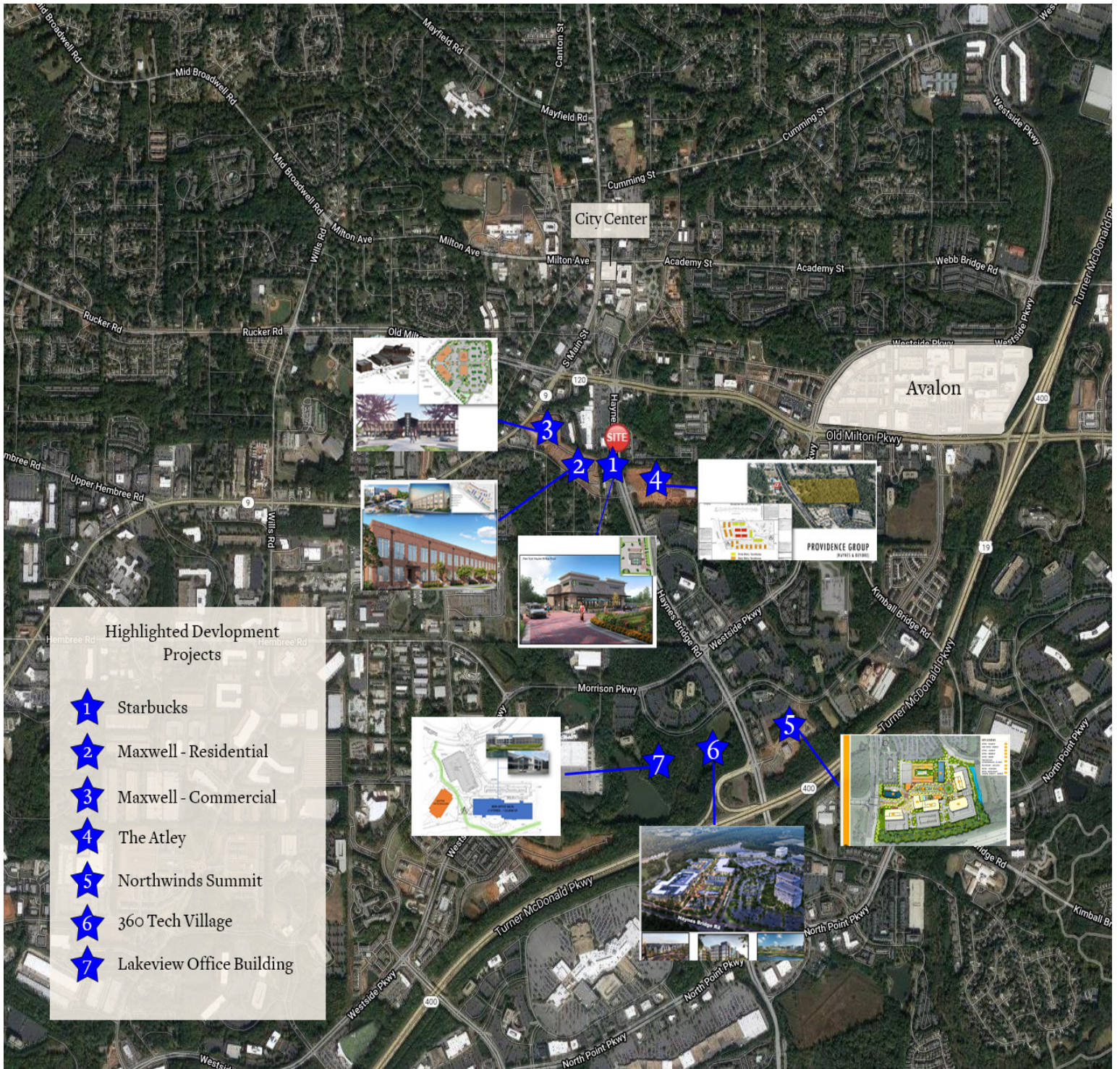
11760 Haynes Bridge Road, Alpharetta, GA 30009



11760 Haynes Bridge Road

Alpharetta, Georgia

11760 Haynes Bridge Road, Alpharetta, GA 30009



35 Johnson Ferry Road, Marietta, GA 30068
770.956.8383 | chris.dundon@retailplanningcorp.com
chris.dundon@retailplanningcorp.com
retailplanningcorp.com

RPC