

Prince & Park

Athens, Georgia

1190 Prince Avenue, Athens, GA 30606

- 2,800 sf of space available
- Located in Downtown Athens adjacent to Piedmont Athens Regional Hospital
- Seeking Restaurant or Medical Uses
- 1.5 miles from University of Georgia campus
- UGA has a total undergraduate enrollment of 29,848



KEY TENANTS

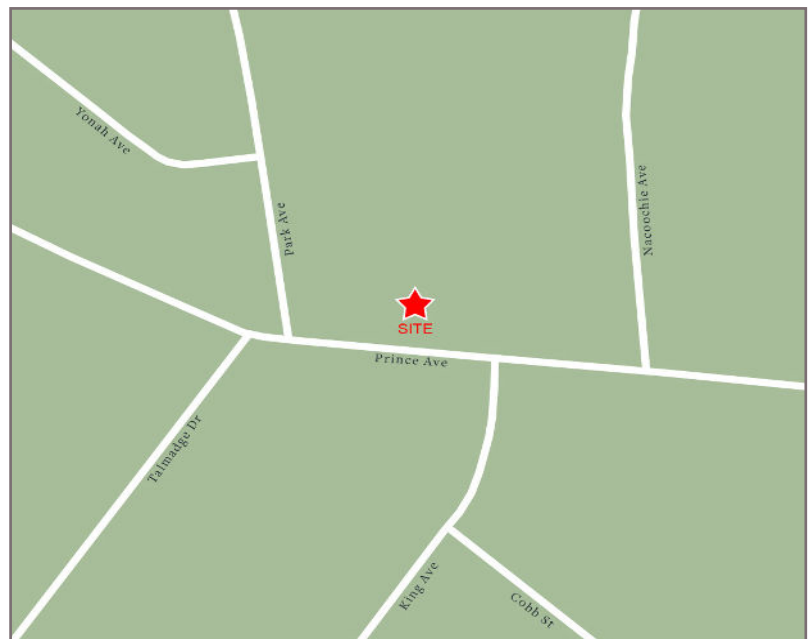
Flying Biscuit, Barberitos and Athentic Brewing Company.

TRAFFIC COUNTS

Prince Avenue	19,400	AADT
---------------	--------	------

DEMOGRAPHICS

	1 Mi Radius	3 Mi Radius	5 Mi Radius
Population	8,860	67,985	112,192
Households	4,066	26,614	45,214
Avg HH Income	\$67,132	\$60,315	\$66,189
Daytime Pop	24,682	49,842	68,986



Prince & Park

Athens, Georgia

1190 Prince Avenue, Athens, GA 30606

Tenant	Sf	Ste
--------	----	-----

1180 Prince Ave		
-----------------	--	--

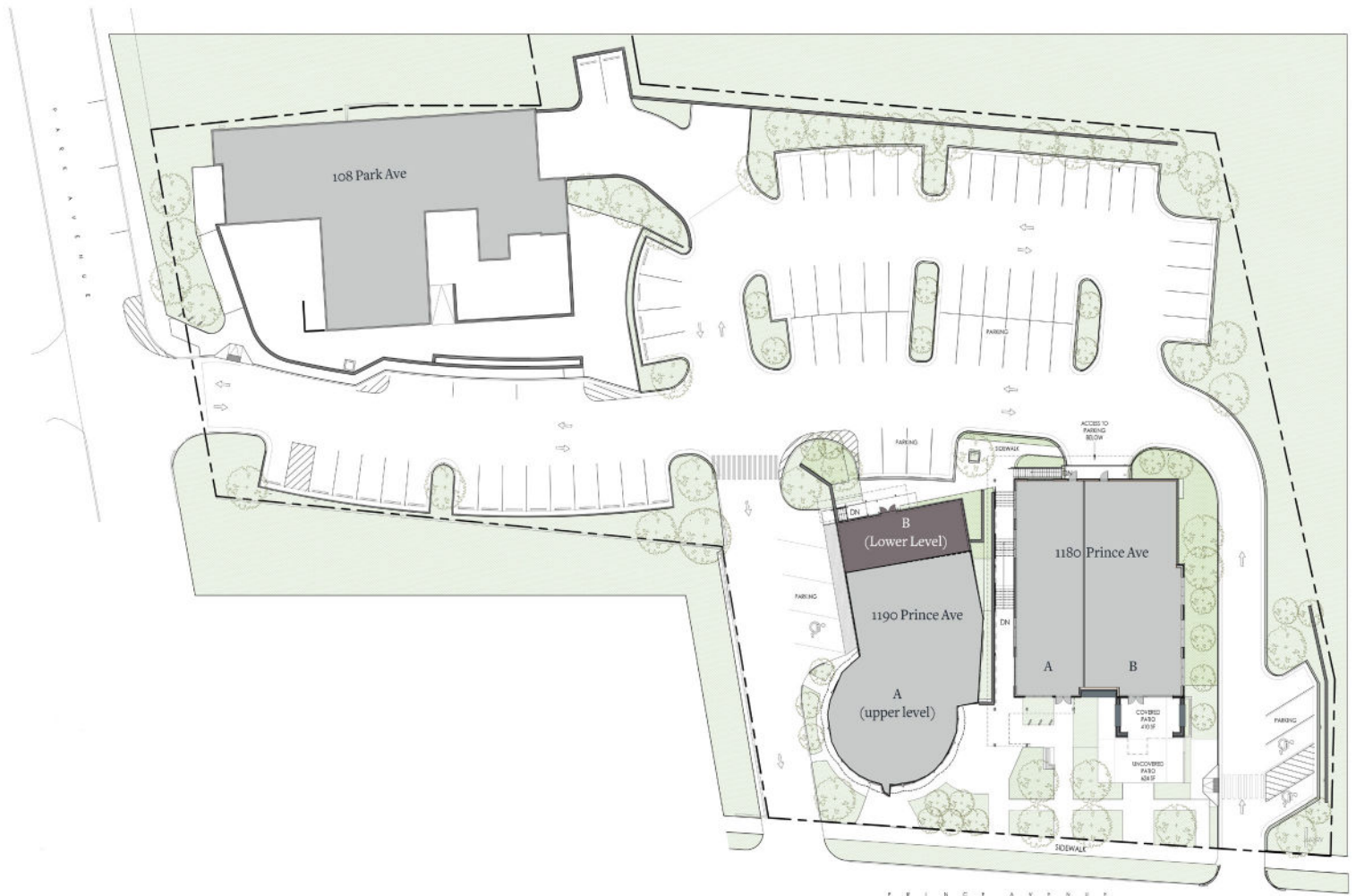
Barberitos	1,983	A
Flying Biscuit	2,750	B

1190 Prince Ave		
-----------------	--	--

Daily Groceries Co-O	4,900	A
Available	2,800	B

108 Park Ave		
--------------	--	--

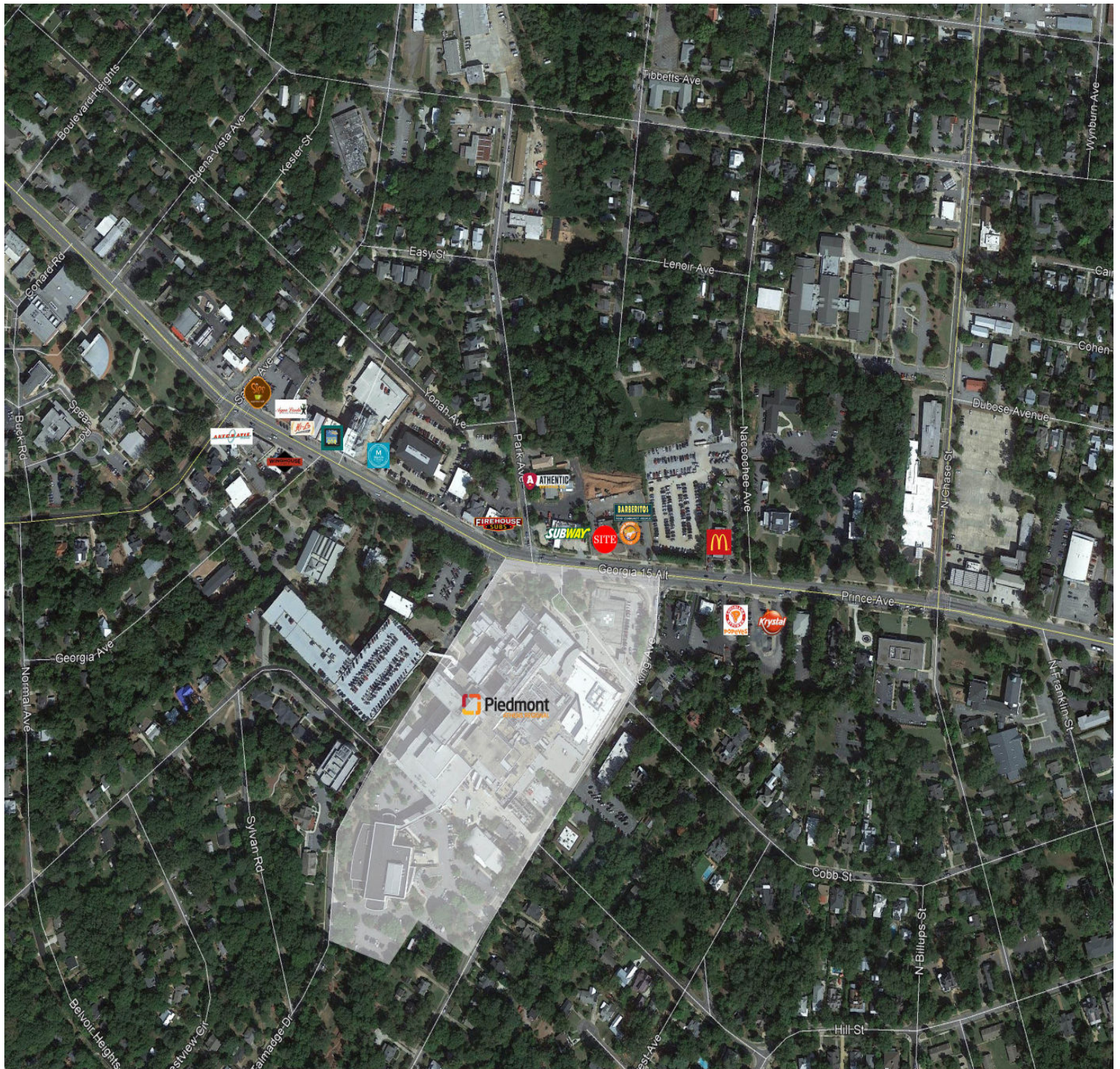
Athentic Brewing Co	10,500	
---------------------	--------	--



Prince & Park

Athens, Georgia

1190 Prince Avenue, Athens, GA 30606



RPC

Prince & Park

Athens, Georgia

1190 Prince Avenue, Athens, GA 30606



35 Johnson Ferry Road, Marietta, GA 30068
770.956.8383 | fraser.gough@retailplanningcorp.com
retailplanningcorp.com

RPC